



Osse River Div 5

Status

2023 Situation

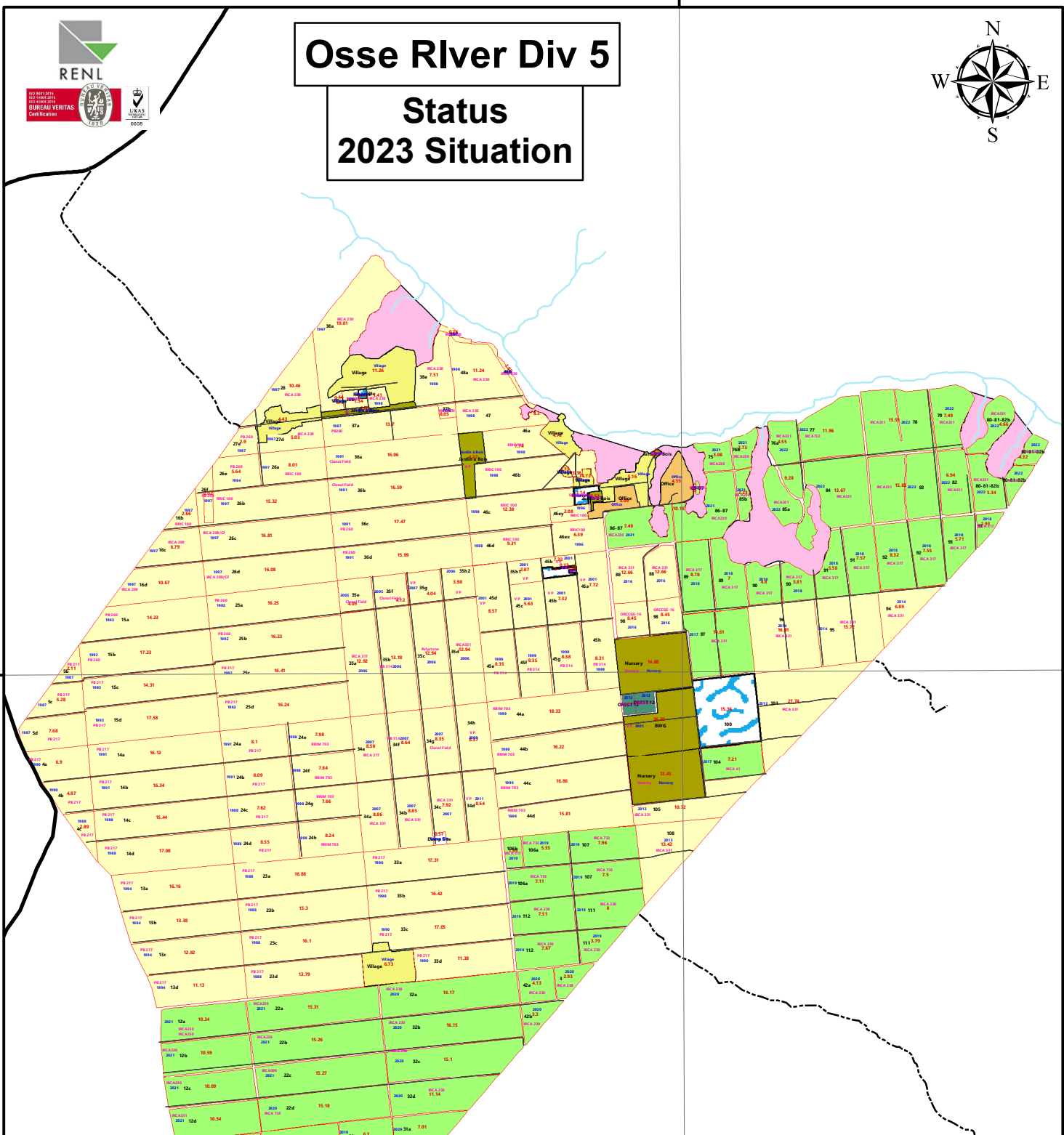


6.4583° N

6.4583° N

6.4167° N

6.4167° N



Legend

	Culvert		Secondary Road		Nursery
	Dump site		Tarmac Road		Jardin à Bois
	Gate		Stream		Réserve
	IT Mast		Immature		Office
	Watch Tower		OREST 12		Village
	Settlement		Mature		Ravines/Swamps
	Earth Road				

Scale: 1:33,200
 Coordinate System: Projected
 Datum: UTM, WGS 1984, Zone 31N
 Author: E.J. Canaan
 Reviewer: Adekoya Adewale
 Copy Right: RENL GIS
 (c) Feb, 2023

MAP-AGR-GIS-AR-Div 5-04-03

